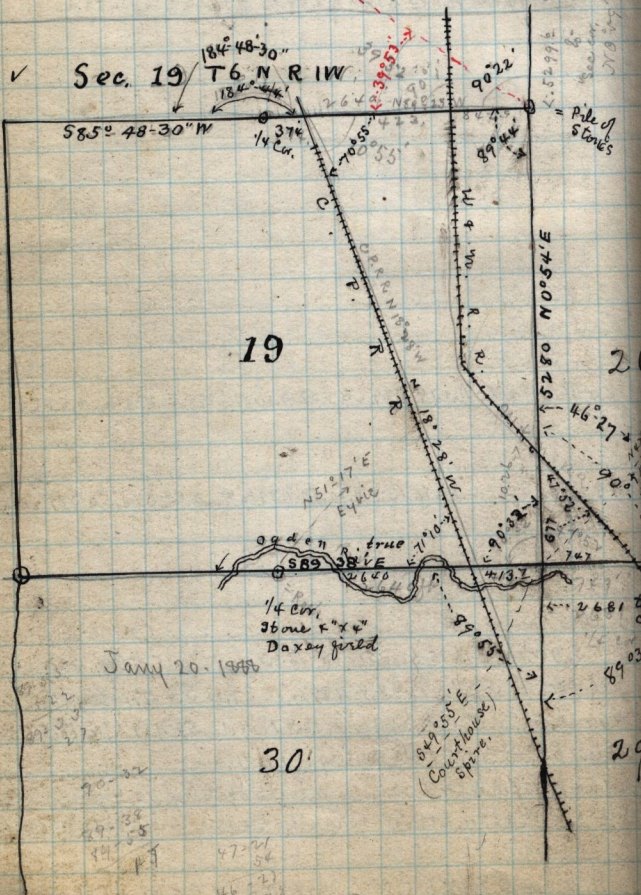


✓ Gilbert Belnap Patentee N.W. 1/4 Sec. 18 T5

- K-487- ⊕ Thomas Hull Sen
- M-336- James Riley
- M-356- Wm W. Burton
- Q-406- ✓ Geo. Cottle
- W-283- ⊕ Gilbert R. Belnap

- filed Sep 22-1877
- Nov 14-1879
- Nov 20-1879
- Feb 21-1884
- Sep 27-1886

▣ = E. gable FARR'S BARN.



July 20. 1888

(Coxey house)
849° 55' E
5372.